

# Sentry

Sentry® is a comprehensive digital content monitoring solution for advanced video networks. It enables video service providers to deliver services with optimum quality while reducing operational expenditures.

*Monitor your entire network with rich graphs and an easy to use web-based interface.*

Sentry



Sentry Features:

**Audio and Video Quality of Experience Scoring System**

**Audio Silence and Audio Level Issue Detection**

**Detect Black Video, Frozen Video, Tiling / Macroblocking**

**Triggered Alert Stream Capture**

**Historical Reporting and Graphing**

**Transport Stream Bandwidth Graphing**

**Program Group Bandwidth Graphing**

**IP Network Impairment Analysis**

**Alert Filtering and Resolution Tracking**

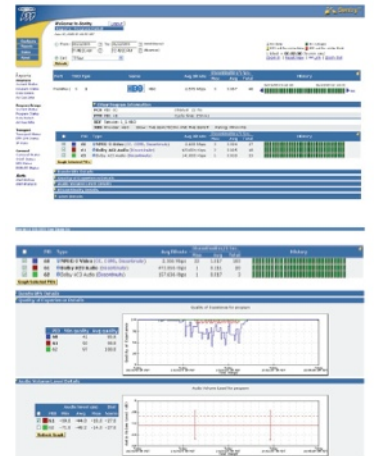
**Carousel Monitoring (SA-BFS, DSM-CC, tru2way™)**

**Digital Program Insertion**

Sentry identifies anomalies in the network at the IP and MPEG layers, as well as in quality of experience (QoE), identifying issues including frozen video, tiling / macroblocking, black screen and audio disruptions or audio level issues, which represent the bulk of trouble calls from subscribers.

Sentry's multi-threshold-based alerting capability enables a flexible alert configuration. Sentry uses this approach for alerting, because it is effective in detecting problems in their developing stages before a subscribers experience is impacted. This capability, combined with detailed root-cause troubleshooting information appended in the actual alert, allows engineers to resolve problems quickly and often before subscribers experience any quality deterioration or outage.

Detection and alerting of a subscriber impacting issue is only part of the monitoring functions of Sentry. Analysis tools coupled with historical data give service providers the ability to resolve complex and intermittent problems quickly. Sentry's advanced reporting capabilities give operators the ability to generate reports that quickly identify the top offending programs or locations. Trending reports quantify improvements made over time. Lastly, reports can be automatically generated and forwarded via email for an accurate and timely assessment of the quality of every program.



Mixed Signals, Inc.  
222 N. Sepulveda Blvd  
Suite 1750  
El Segundo, Ca 90245  
Tel: 310.227.8620  
Fax: 310.648.7622

**Sentry**  
**Sentry Verify**  
**Sentry Edge**  
**Medius**  
**Consul**

Mixed Signals  
Source-to-Edge  
Monitoring Products



visit us at [mixedsignals.com](http://mixedsignals.com) [sales@mixedsignals.com](mailto:sales@mixedsignals.com)

Mixed Signals  
Monitoring Products

Sentry

- Monitor entire channel line-up
- Reduce Op-Ex
- Web Interface
- 24/7 real-time monitoring
- Detect intermittent problems
- Alert notification
- Historical reporting

Medius

- Custom reports
- Consolidate data from multiple Sentry units
- Single point for NMS integration
- Dashboard
- Centralized alarm reporting and notification from individual or grouped Sentrys

Sentry Verify

- Monitor input to hub sites to detect issues during transport
- Detect MPEG and IP issues
- Cost-effective solution
- Provides additional intelligence within source-to-edge

Sentry Edge

- Monitor linear broadcast programs
- Cost-effective solution
- Be alerted to RF errors
- Generate historical and trending reports

# Sentry Specifications

### Supported Protocols

- Video: MPEG-2, H.264, VC-1
- Audio: Dolby AC-3 (5.1 Surround)
- MPEG-1 layer II (mono, stereo)
- Carousel: tru2way, BFS MHP / DSM-CC
- Program Insertion: SCTE-35 (local ads)

### MPEG / IP Input Port

1000BASE-T Ethernet interface

### Management Port

1000BASE-T Ethernet interface

### Physical Characteristics

- 1RU x 19"
- Weight: 9.2 kg
- 100-240VAC, 50-60 Hz power supply

### Environmental Conditions

- Max storage temperature: 70c
- Max operating temperature: 35c
- Max humidity: 85%

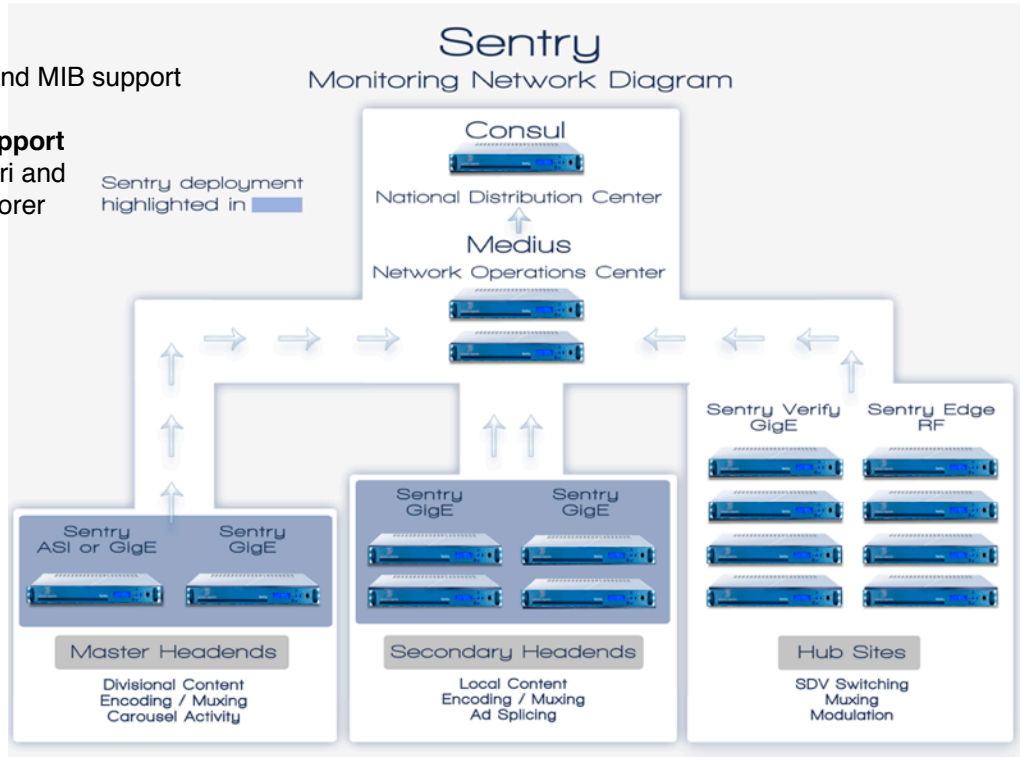
HD/SD programs, SPTS or MPTS, multicast (IGMP v3) & unicast

MPEG-PSI, DVB-SI, ATSC-PSIP table support

SNMP trap and MIB support

### Browser Support

Firefox, Safari and Internet Explorer



*Sentry can be deployed throughout your network, but it is most cost-effective at your master and secondary headends where digital content is first acquired and where it undergoes the most manipulation before it is sent to hub sites and the customer premises.*

Mixed Signals, Inc.  
222 N. Sepulveda Blvd  
Suite 1750  
El Segundo, Ca 90245  
Tel: 310.227.8620  
Fax: 310.648.7622

Mixed Signals  
Source-to-Edge  
Monitoring Products

Sentry  
Sentry Verify  
Sentry Edge  
Medius  
Consul

